



BREAKOUT ROOM 1: CULTURAL AND ECOSYSTEM ADAPTATION IN ACTION

ADAPTATION IN ACTION - BUILDING RESILIENCE IN NSW

#AdaptNSW2019



AdaptNSW

Climate Change Adaptation for Aboriginal Cultural Values

Narran Lakes Case Study

Jason Wilson, Joint-Chairperson, Narran Lakes Aboriginal Joint Management Committee

12 November 2019



Narran Lakes is a natural and cultural landscape



Predicted Climate Change at Narran

- Less rainfall
- Longer and more severe drought
- More extreme heat waves in summer
- Higher risk of frost in winter
- Flooding less frequent and smaller



Adapting: lignum

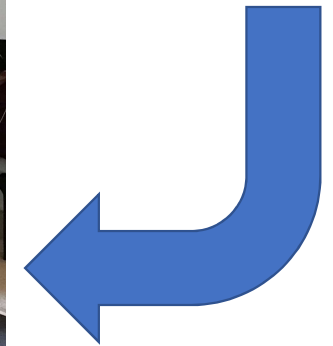
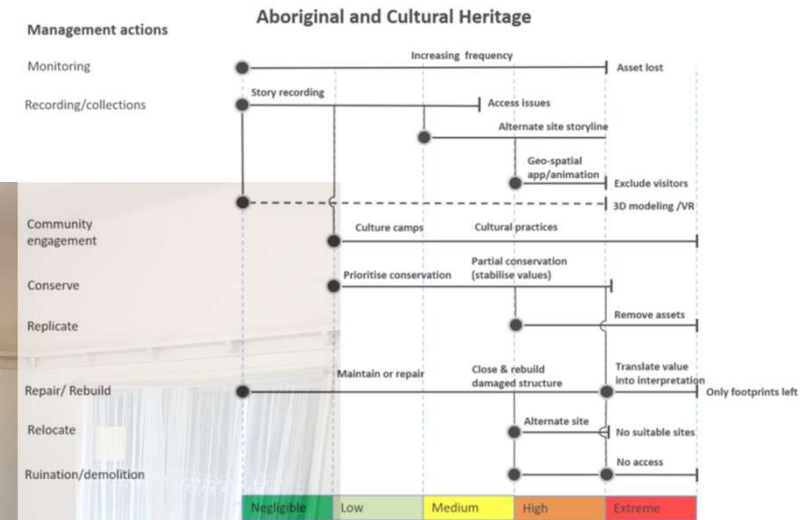
- Lignum is important for food and fibre; and habitat
- Lignum is part of many cultural activities
- Without flooding it dies
- Current risk to lignum is low to medium – but this will change
- While there is enough lignum available for cultural practices now, we need to plan for when there may not be



Lignum pathways

Decisions we made:

- Change timing of Open Day to the Winter (July) when *lignum* is green and healthy.
- This reduces heat risk for Elders on-Country
- Begin doing both cultural and scientific monitoring of *lignum* so we know how it is going and when we need further action
- If it looks like we will lose the lignum, women lead establishment of an off-site nursery to maintain lignum stock
- Nursery stock used to maintain cultural practices
- Use nursery stock to prepare for re-establishment when flooding does come



Using the adaptation pathways method to plan for lignum

We have a responsibility to ensure our cultural values live on

- We know things are getting bad...but we needed a plan
- The adaptation pathways has helped us see what we need to do, and when to do it
- This put us in control and established actions
- We are going to continue this process and integrate it into our strategic plan



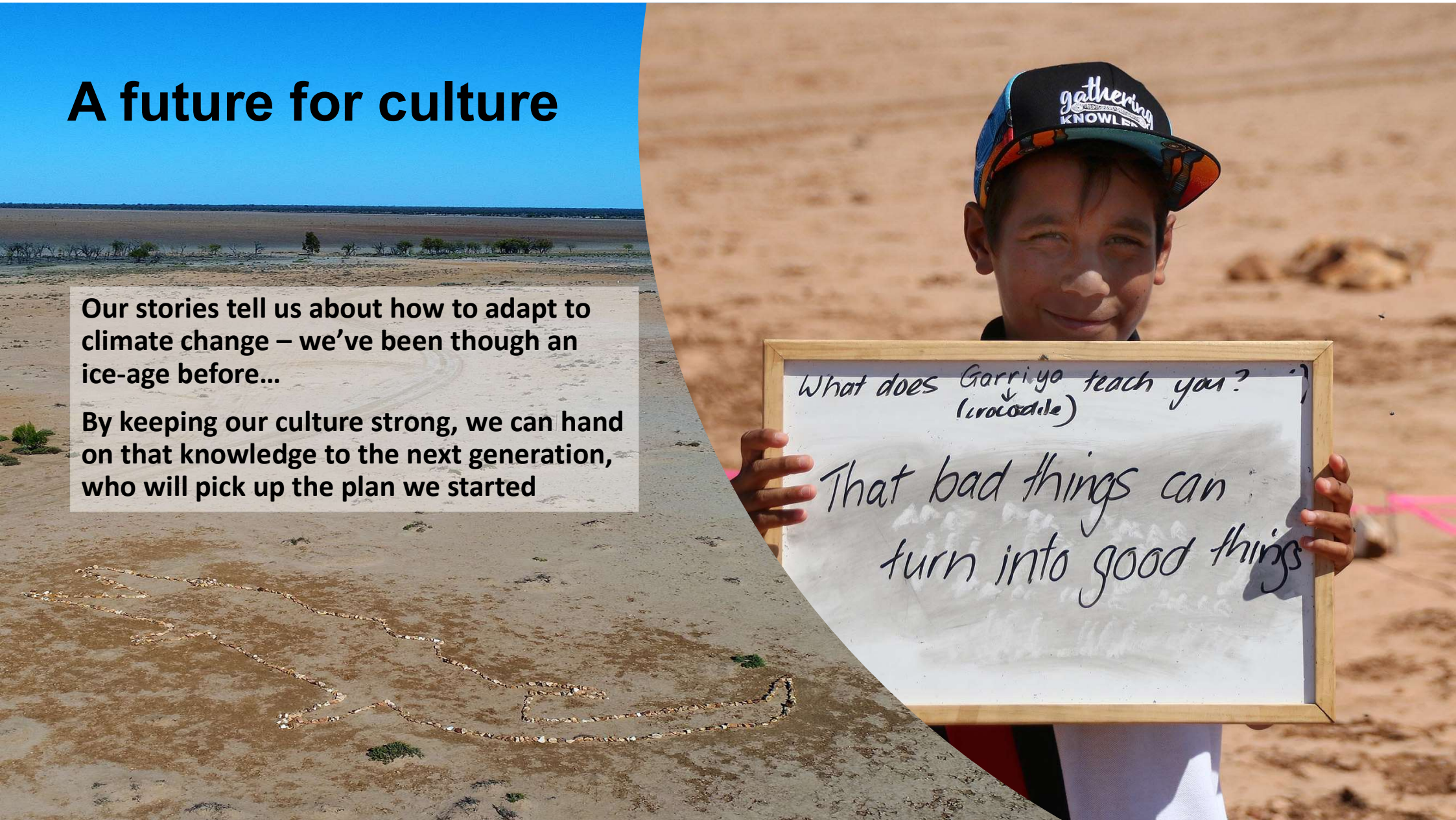
A future for culture

Our stories tell us about how to adapt to climate change – we've been through an ice-age before...

By keeping our culture strong, we can hand on that knowledge to the next generation, who will pick up the plan we started

What does Gorrigo teach you?
(crocodile)

That bad things can
turn into good things





Climate-ready Revegetation

Isobel Cummings

Project Officer, Cultural and Ecosystem Adaptation –
Department of Planning, Industry and Environment



Climate-ready revegetation

A guide for natural resource managers

Nola Hancock Macquarie University, Rebecca Harris Antarctic Climate Ecosystems CRC, University of Tasmania, Linda Broadhurst, CSIRO and Lesley Hughes Macquarie University



ADAPTNSW: Adaptation in Action – Building Resilience in NSW



Provenance

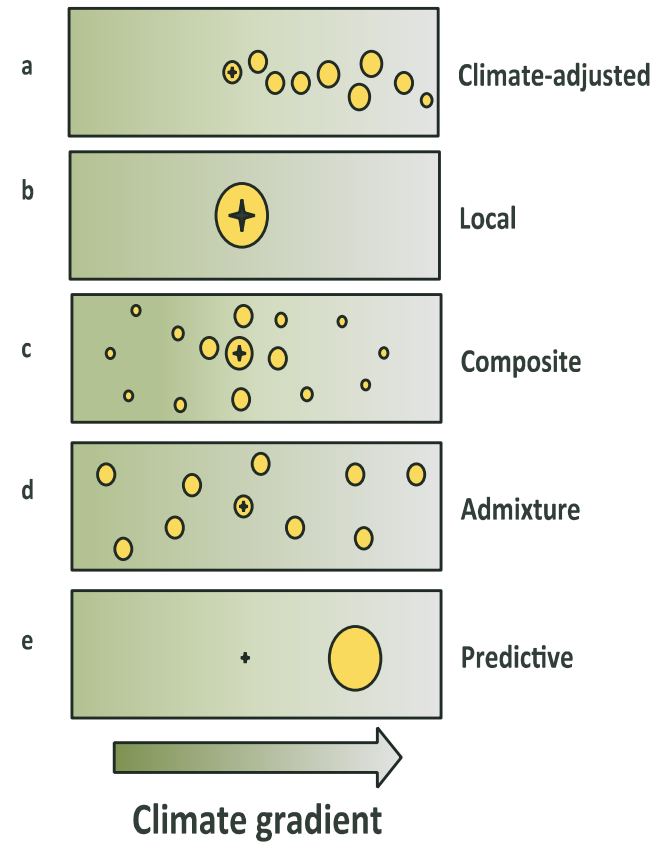


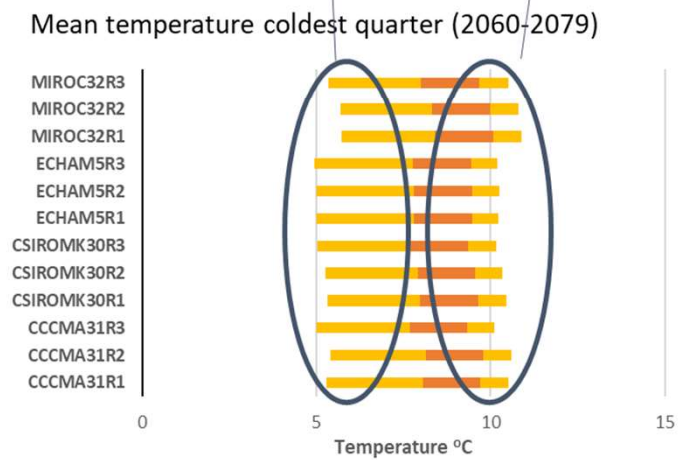
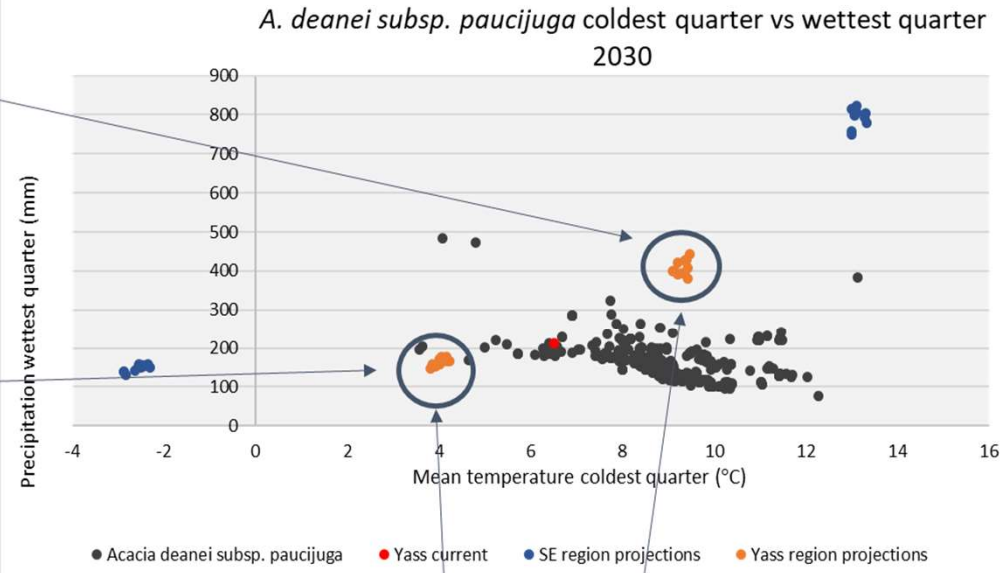
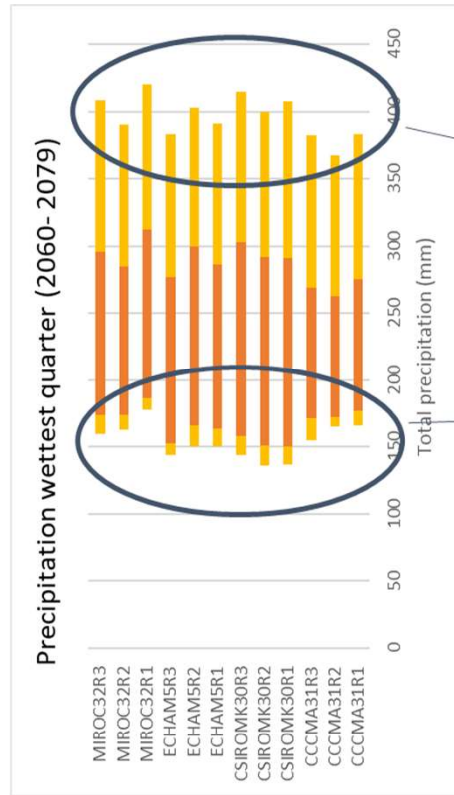
Figure from Climate-ready revegetation, modified from Prober *et.al.* 2015

Climate ready re-vegetation pilot: Yass Area Network Landcare group (YAN)

- What is climate-ready revegetation
- Climate Change projections - ANUCLiM
- Applying information to planting
- Planting design
- Next steps



Balance quest for perfect knowledge with urgency of decision making





Where to from here; NSW Climate-ready revegetation program

- Increase carbon storage
- Provide connection corridors
- Maintain genetic diversity
- Reduce land degradation and salinity
- Control erosion through soil protection
- Provide habitat for unique biodiversity including threatened species

Interested in getting involved?

Contact us;

Isobel Cummings

Cultural and Ecosystem Adaptation - The Department of Planning, Industry and Environment

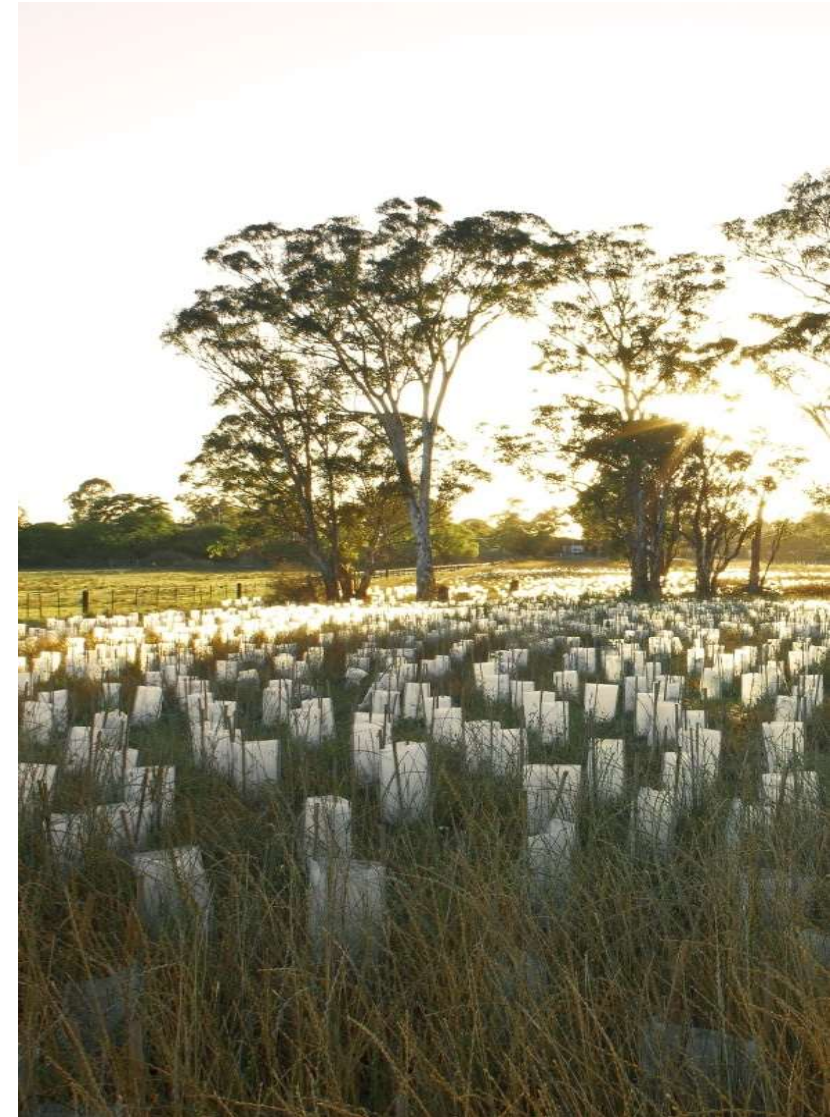
(02) 9995 6546

Isobel.Cummings@environment.nsw.gov.au

Polly Mitchell

Cultural and Ecosystem Adaptation - The Department of Planning, Industry and Environment

Polly.K.Mitchell@environment.nsw.gov.au



Thanks to Andy Burton, North Sydney Council Bushcare,
Hornsby Community Nursery and Nola Hancock for the use of their images.